



# GROUNDLOOR

## SITE PREPARATION: A GUIDELINE FOR GROUNDLOOR™ LOCKERS



03 4050 7660  
[ask@groundfloordelivery.com](mailto:ask@groundfloordelivery.com)

# Congratulations on choosing a Groundfloor delivery locker system!

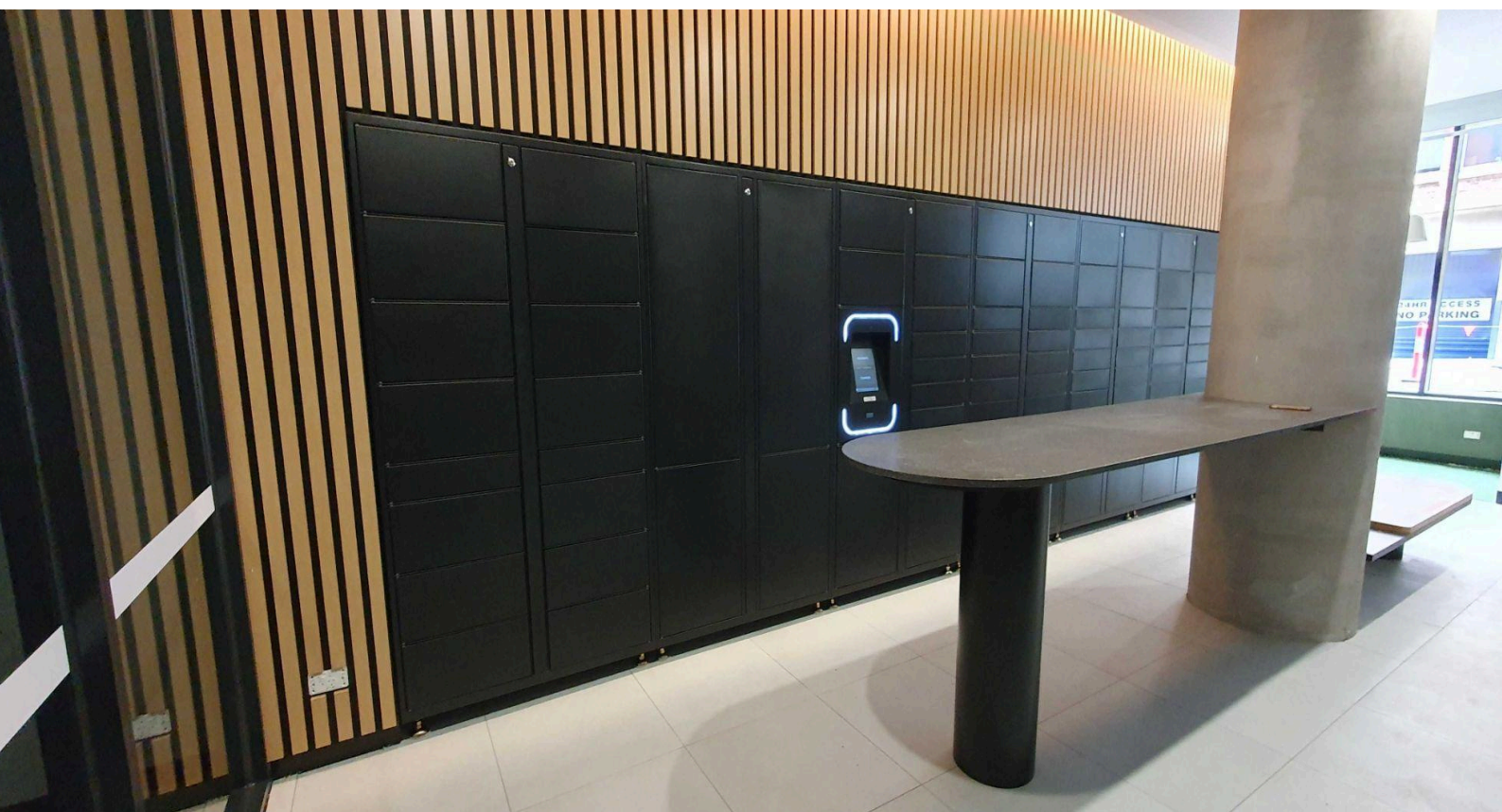
## YOUR PRE-INSTALLATION PREPARATION

Your Groundfloor Installation Manager will reach out to you shortly and confirm the sequence and placement of towers to your site specification. Our lead installer will then reach out in the coming weeks prior to confirm the site is ready for installation. On the day, your Groundfloor lockers will be delivered, positioned, joined, secured, and tested ready for operation.

### WHAT QUALIFIES AS AN INSTALL READY SITE?

- Area designated for the lockers is correctly sized
- All construction has been completed
- An accessible 10amp GPO power supply
- An accessible data point

Unfortunately, if these requirements are not met, we may need to re-organise the installation for another date and any additional charges for delivery or time on site will apply.



# The Power Supply

## A MUST GET RIGHT FOR THE INSTALLATION PROCESS

A working power supply set-up is the most important step in the installation process.

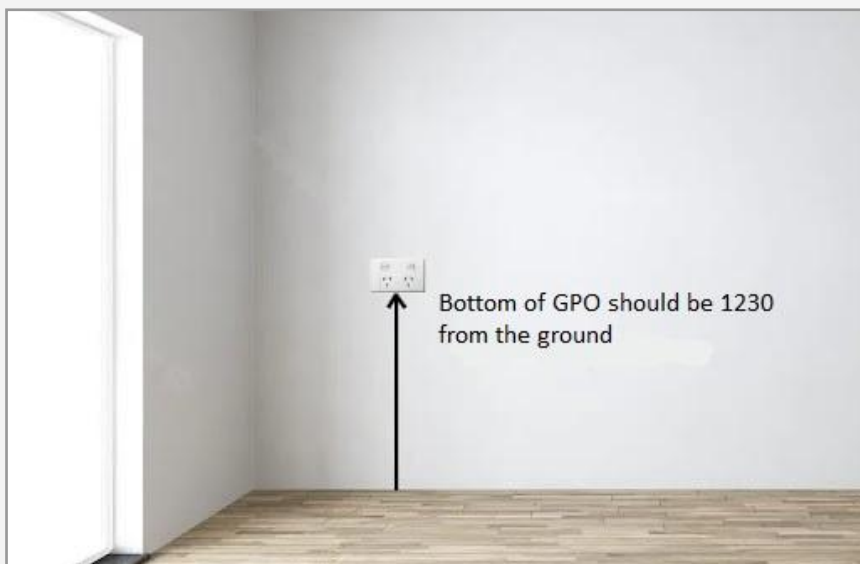


### GPO INSTALLED BEHIND THE LOCKER SYSTEM

- ✓ Behind the kiosk tower, there is a 100mm x 200mm cut out on the back of the tower (as pictured). If you were facing the lockers, GPO should be positioned 190mm from the left of the kiosk, taking into account 1005mm for each additional tower that is to the left of the kiosk tower.
- ✓ The GPO should be 1230mm from the ground
- ✓ For best results we strongly recommend a recessed outlet.

### GPO INSTALLED ABOVE THE LOCKER SYSTEM

- ✓ The GPO cannot be below 2090mm as this will interfere with the locker positioning
- ✓ If the GPO is not behind the lockers, we strongly recommend that it be covered to avoid it being tampered with



# Other Indoor Necessities

A working power supply set-up is the most important step in the installation process.



## A DATA POINT

Your kiosk tower will come equipped with a dual network modem to operate over 4G. We do however require that your site provision a standard data point to ensure a smooth uninterrupted internet connection.

Your data point can be supplied using the standard RJ45 or a loose ethernet cable from the wall

Your data point should be completely patched before your installation date and the network operational. Should your network require any ports opened or our systems whitelisted, please let us know prior to the installation date

If the data point is not ready for us, this may require us returning to the site at a later date and charges may apply.

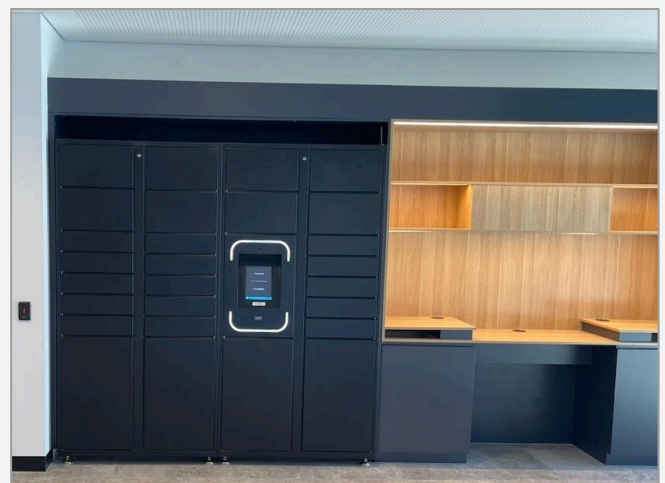
## JOINERY, TRIMS AND ANCHOR POINTS

After the towers have been set into place, they will be joined together at the top with 2 brackets at the front and rear of the towers.

Additionally, we highly recommend choosing a spot at your building in which we can attach a safety bracket to the wall or floor.

All power and data for each tower comes from the main kiosk tower. If your system will be split into sections, we will need to identify a path of travel for the cabling. This may mean using Black/White trunking or conduit. We may also take advantage of existing cable trays or shadow lines.

Our parcel towers boast a sleek design, featuring exposed brass-coloured feet. This aesthetic seamlessly complements various locations and interior styles. Should you desire additional joinery or trim to conceal the feet, we recommend consulting with your designer and builder.





# Outdoor Site Preparation

## BUILT TO BE PLACED ANYWHERE

Typically we recommend that our lockers be positioned inside to maximise their useful life.

However, our lockers are built to fully withstand outdoor conditions.

For optimal performance we recommend the following precautions.



### RAIN PROTECTION

- Locate your lockers under a deep overhang or protected by a canopy or shelter. This keeps rain off the towers and direct sunlight from the touchscreen.
- Shielding the system from sun and rain also ensures the best possible customer experience for users. (For a longer life outdoors, consider purchasing our outdoor locker units, instead.)

### SUN PROTECTION

- If possible, orientate the lockers so that the sun is blocked entirely by a structure or the landscape.
- If this is not possible, a southern exposure is always best





# Outdoor Site Preparation

## PROTECTION FROM THE ELEMENTS

### CANOPY AND SHELTER CRITERIA

An angled roof which extends:

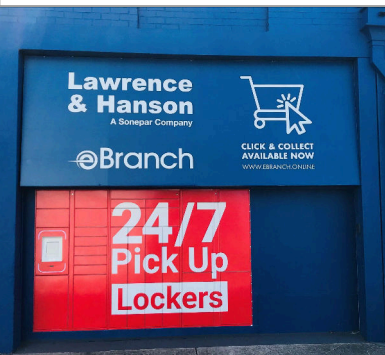
- beyond the back of the lockers by at least 200mm,
- beyond the front face of the lockers by at least 1500mm,
- beyond the sides of the lockers by at least 500mm, depending on the design

Panels protecting each side of the locker bank (where there is no wall or fencing immediately adjacent)

Dimensions:

- Interior height no less than 2100mm
- Width 1m per tower PLUS 30mm *per tower* tolerance
- Minimum depth 600mm
- Roof dimensions as above

A location deep undercover is ideal and does not require a separate structure be erected



# Guideline for Builders / Construction

## OUR TOWERS COME IN A VARIETY OF SIZES

ALL STANDARD TOWERS HAVE IDENTICAL DIMENSIONS:

**Height:** 2020mm - 2050mm (Level dependent)

**Width:** 1000mm

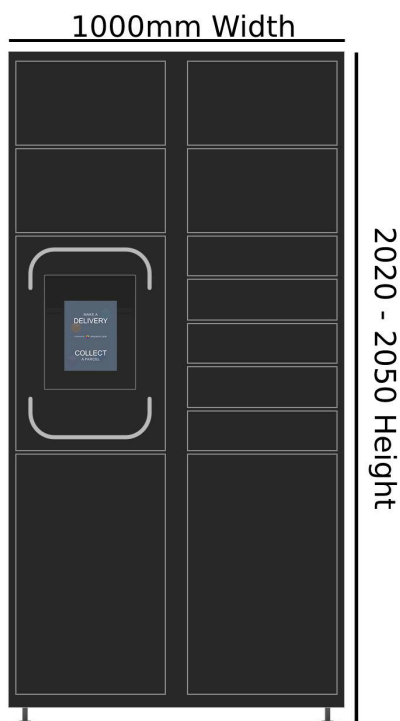
**Depth:** 500mm

**Weight:** 100kg - 125kg

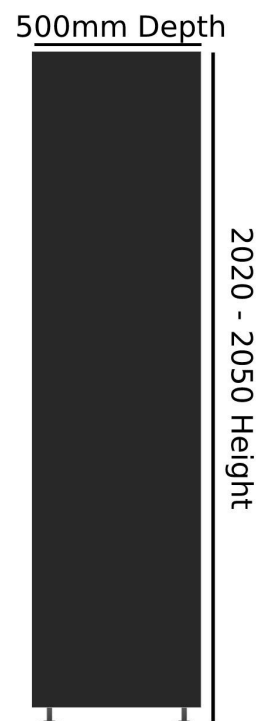
## INSTALLATION ALLOWANCES

- Height does range between the sizes above. This is due to our levelling feet attached to the tower. No size between these can be guaranteed as we normally adjust to suit the flooring. Total clearance for height is 2070mm.
- Width requires a tolerance of 10mm per tower up to a maximum of 50mm. This will allow for a total clearance of 1010mm for a single tower, 2020mm for 2 towers, 3030mm for 3 towers and so on.
- Depth requires a 60mm gap to allow for airflow through the vents at the back of the tower. Total clearance for depth 560mm.

FRONT VIEW



SIDE VIEW



# Refrigerated Lockers

## DESIGNED TO MEET YOUR COMMUNITY'S NEEDS

Our refrigerated towers are slightly different to our standard towers:

### DIMENSION

Height: 2130mm

Width: 1100mm

Depth: 550mm

Weight: 180kg\*

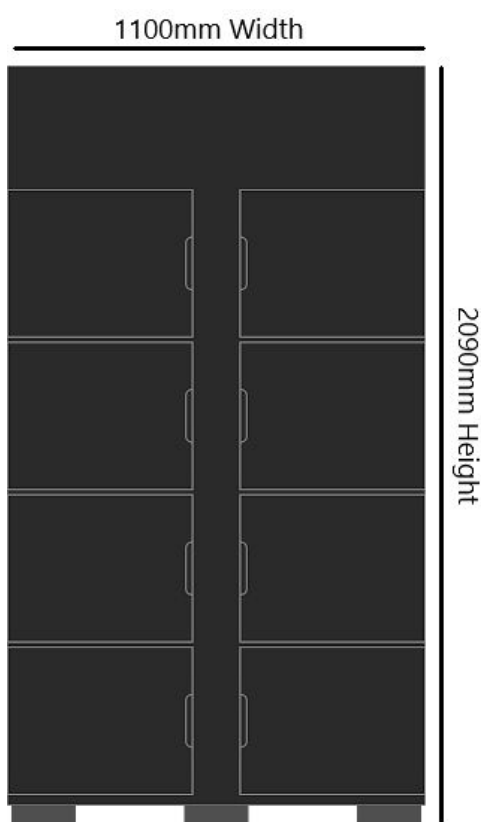
### ALLOWANCES

- Height requires a gap of 10mm at the top. Height cannot be adjusted. (2140mm Total Clearance)
- Width requires a gap of at least 55mm on both sides of each tower. This will allow for a total of 110mm clearance for a single tower, 165mm for 2 towers, 220mm for 3 towers etc.
- Depth requires a 80mm gap to allow for airflow to the back of the tower. (630mm Clearance)

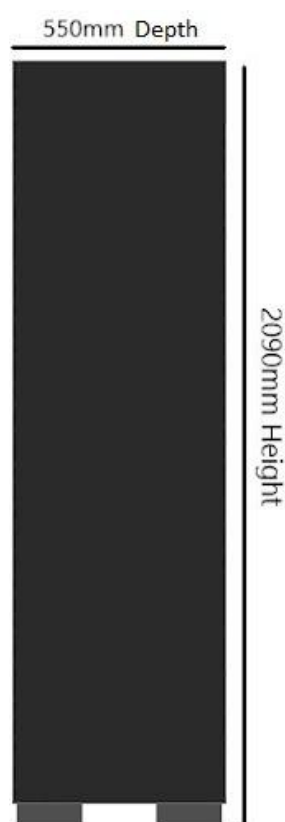
### OTHER IMPORTANT FRIDGE INFORMATION:

- Fridges cannot be levelled to the ground and must be placed on a flat surface
- The doors on the fridge will need clearance of roughly 60mm when they open. This means you will need to have your fridge placed forward from other lockers, or a gap between any walls or other lockers.

FRONT VIEW



SIDE VIEW





# Your Site Checklist

## HARDWARE & SETUP

Preparation	Description	Completed
Install Site Size	Space for towers + allowances as above	<input type="checkbox"/>
Tower Sequence	Confirm with Installation Manager your choice of final tower sequence	<input type="checkbox"/>
10amp GPO	Installed and in the correct location (1210mm high and 190mm from the closest left hand wall), or as agreed at the pre-installation site visit.	<input type="checkbox"/>
Data point	Lan point is installed and live (Required for all new construction. Also required if recommended at your pre-installation site visit.)	<input type="checkbox"/>
Shelter (outdoor system)	Shelter constructed and IP-rated GPO in place.	<input type="checkbox"/>
Installation-ready site	No ongoing construction, as close to PC as possible, or immediately after PC.	<input type="checkbox"/>
Refrigerated towers	Not suited for outdoors. Locate indoors only. Additional 10amp GPO required for EACH refrigerated tower.	<input type="checkbox"/>





GROUND FLOOR

Smart parcel lockers.  
We fix the parcel problem  
and so much more...



+61 3 4050 7660 • [ask@groundfloordelivery.com](mailto:ask@groundfloordelivery.com)